

## 2011 Seminar

Every three years we hold a seminar with our Management teams, the Trustees and some selected guests. This gives us all an opportunity to come together and reflect on our accomplishments and look for further opportunities that can be opened up to assist our elderly ones in the future.

The seminar took place in September and proved to be very different to any of the seminars held previously.

Brothers and sisters from eight different countries (some with established care facilities) contacted us saying they would like to be present at the seminar in order to make their feelings known to our trustees and managers and also update us on their achievements within their own countries.

At their own expense, a delegation arrived from each of the eight countries. Some presented visual and audio material to show how they are providing care in their respective countries with local support from brothers and sisters.

All gave reports on issues they were battling to overcome. For example, local authorities, purchasing of land, and the financial and legal complications of setting up a charity.



Delegates representing 9 countries

Some of the brothers present work in the legal field and were able to come together during the seminar and discuss ways to overcome such barriers.

As they gave their reports, at the same time fondly remembering the efforts of our elderly ones when they gave their all in the preaching work and serving Jehovah in their youth, it was very clear to all present that these brothers and sisters are determined to continue on despite setbacks that may come their way, be it financial or otherwise.

The theme of the seminar was based on the name Jah-Jireh and its meaning (taken from Genesis 22:14) and how that meaning has been kept to the fore in the UK. It means "Jehovah provides" or "Jehovah will see to it". The visiting brothers were reminded that we can only be

successful if we rely on Jehovah and not on ourselves.

One of our trustees and one of the delegates were invited, as spiritually mature brothers, to present an item to encourage the managers that if they are going to be successful, they need to keep themselves focused spiritually and they need to encourage those who work along with them to do likewise. A number of ways were presented to show how this could be accomplished, including making every effort to maintain the family worship arrangement in the home and using the Bible as our textbook.

The seminar was an emotional yet stimulating occasion and as everyone made their way home afterwards all felt motivated to keep pressing on in caring for and loving those related to us in the faith and yet keep following theocratic procedures.

## MEDWAY PROJECT

At going to press, we have 524 brothers and sisters throughout the country who have registered their names with us for care. At present we have 164 beds with almost full occupancy therefore we can see how great the need is for more accommodation.

Due to this, it was decided at a recent meeting of the Trustees held November 23rd, that we must press on building a new home on our Medway site with some urgency. It was also decided that we should build a sixty bedded home to care for the anticipated needs of our brothers in the London area Jehovah willing. Of course the last few years and up to this day it has been impossible to borrow money from banks, therefore we will liaise with everyone interested in the project in the South East to see how we can move the project forward.

### Respite Care Update

Because the government are refusing to fund people who need residential care and making them stay in their homes, our respite provision has become a lifeline to families and bodies of elders concerned about our loved ones. We now have 28 families regularly using this arrangement and the list is set to grow.

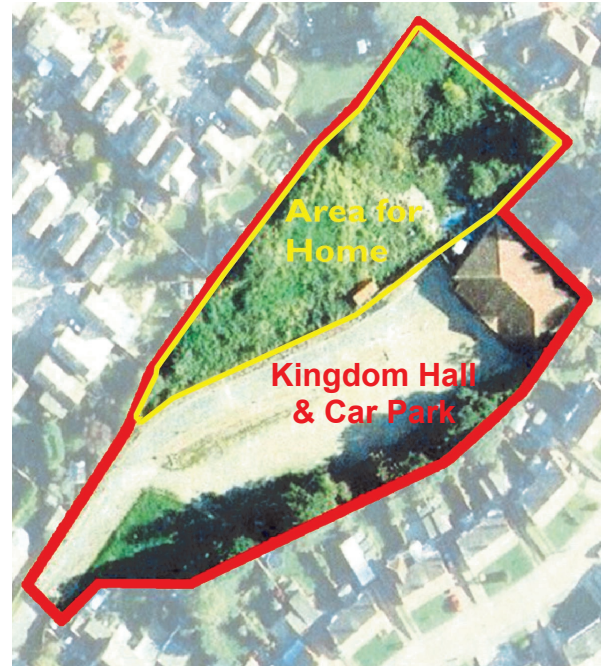
The Medway Project will do much to fill this need in the Greater London area, therefore Medway will provide charity funded care (governed by donations), respite care and normal residential care.

### Funded Care by Donations

As you know we are now caring for brothers and sisters by virtue of donated funds. At present there are eight people benefitting from this arrangement and are very grateful for your donations.

The process we have adopted for providing such care is as follows:-

- Local elders can make a written recommendation to our admissions department and include a record of the brother or sisters history and background in the truth along with information on their circumstances.
- Our admissions department will then process the request along with other relevant information and present this to the trustees for approval.



### Medway Site Information

- approx. 1 acre of land
- 60 en-suite rooms
- Kingdom Hall adjacent
- approx. 10 minutes from the hospital
- approx. 5 minutes from Supermarket

### Travel Information

- 5 minutes from Rainham Railway Station (with direct trains to London City Centre)
- 25 minutes from M25
- 1 hour 15 minutes from M1

### Days Out & Shopping

- approx. 5 minutes from the High St
- 10 minutes from Capstone Farm Country Park
- 10 minutes to Hempstead Valley Shopping Centre
- Historic areas within the Medway towns are easily accessible within 30 minutes by either car or train